



Longmeadow/East Longmeadow Shared Health Services Project

Beverly Hirschhorn, Eric Weiss, and Aimee
Petrosky



Overview of East Longmeadow & Longmeadow

- East Longmeadow separated from Longmeadow in 1894
- Similar demographics
 - Majority >60 years old or <18 years old
 - Population size ~15,000
- Median household annual income
 - Longmeadow \$110,000
 - East Longmeadow \$84,173
- Major Difference is Government Structure



History of Project



- How we started
- District Local Technical Assistance (DLTA) grant
- Process of moving from an idea, to an agreement
- Efficiency and Regionalization (E&R) grant in February of 2019 to complete our first town specific Health Needs Assessment (HNA)



Health Needs Assessment

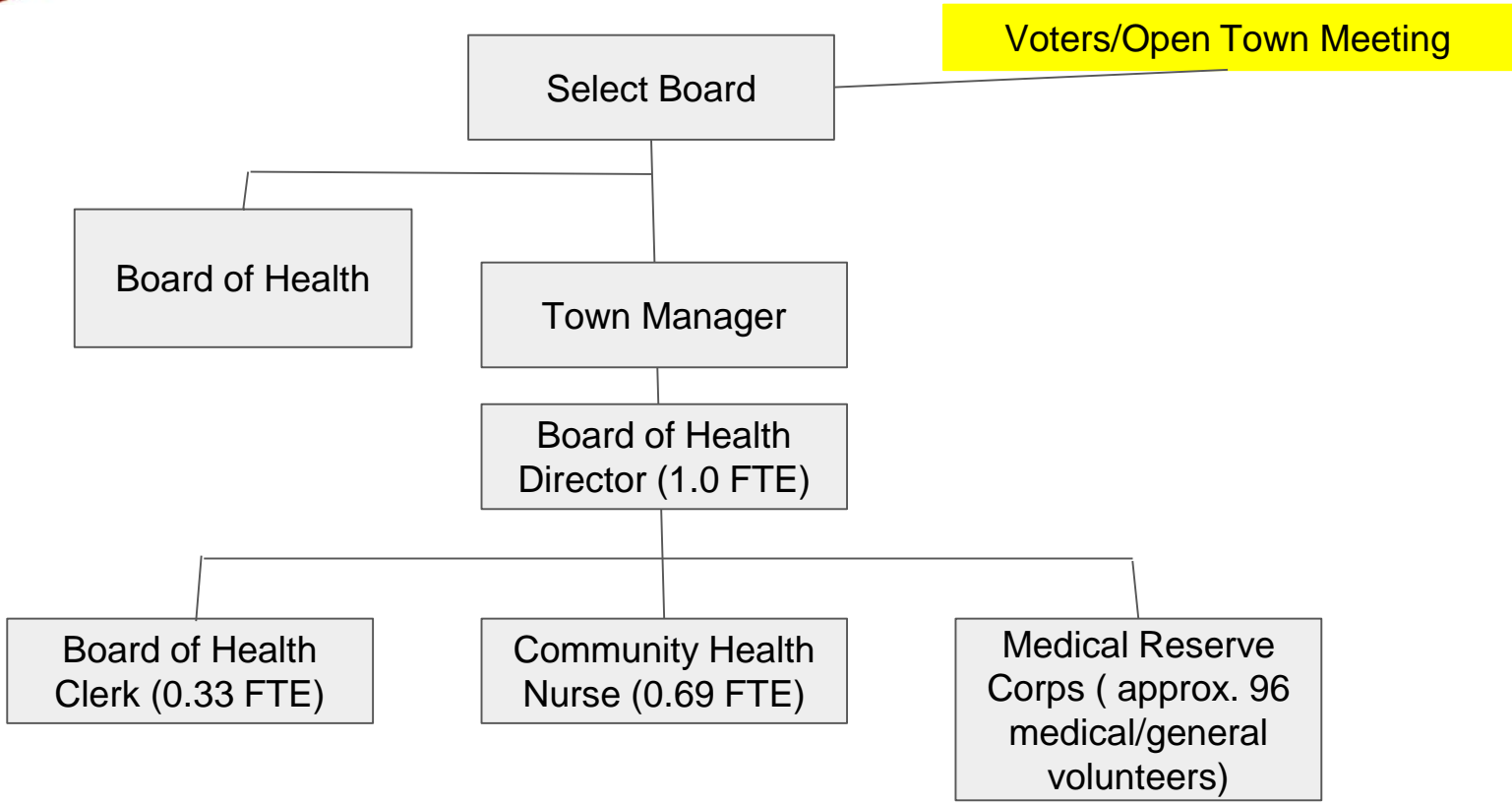


Many Benefits

1. Baseline of both communities services
2. Baseline of both communities needs
3. Replicable to have longitudinal data without funding

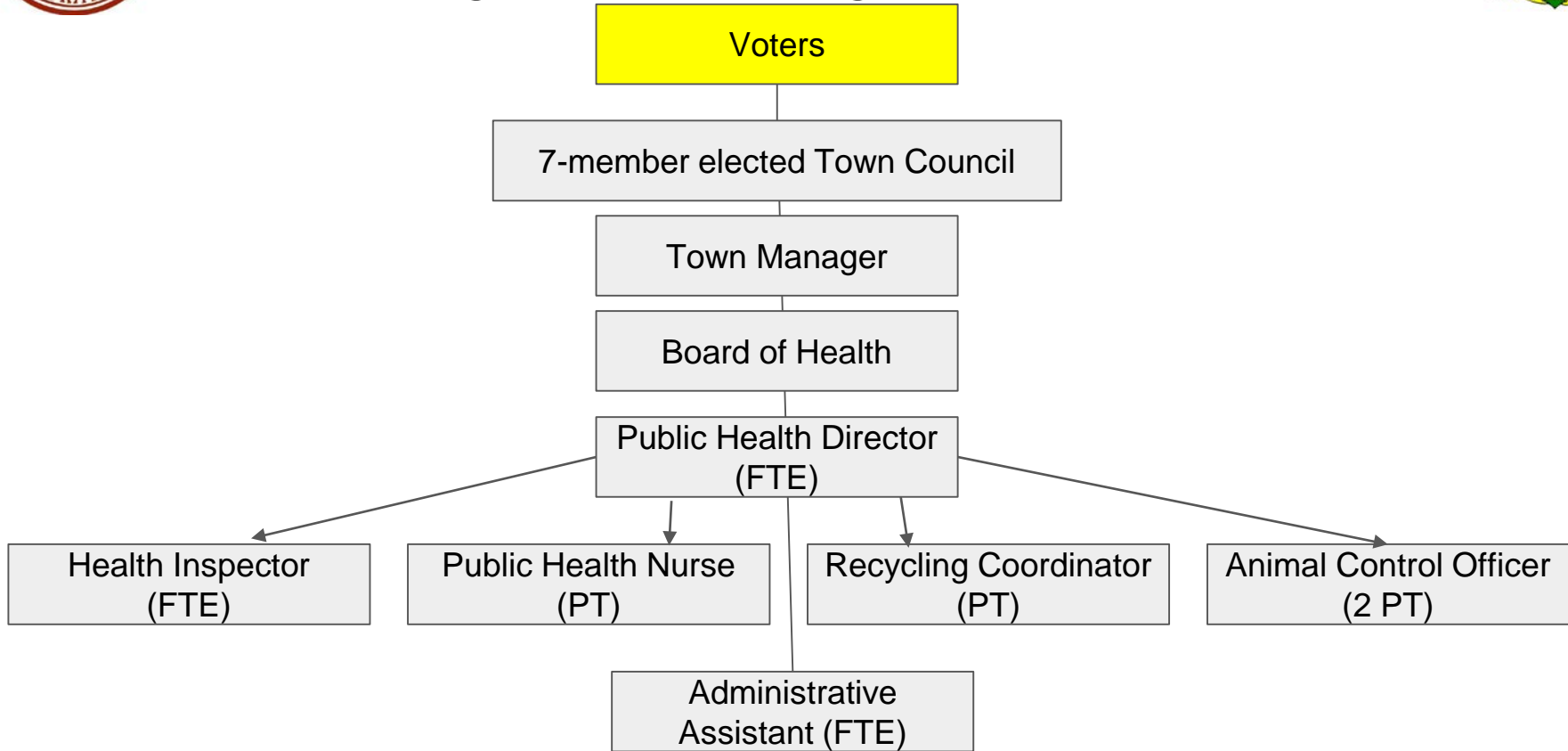


Longmeadow Org Chart



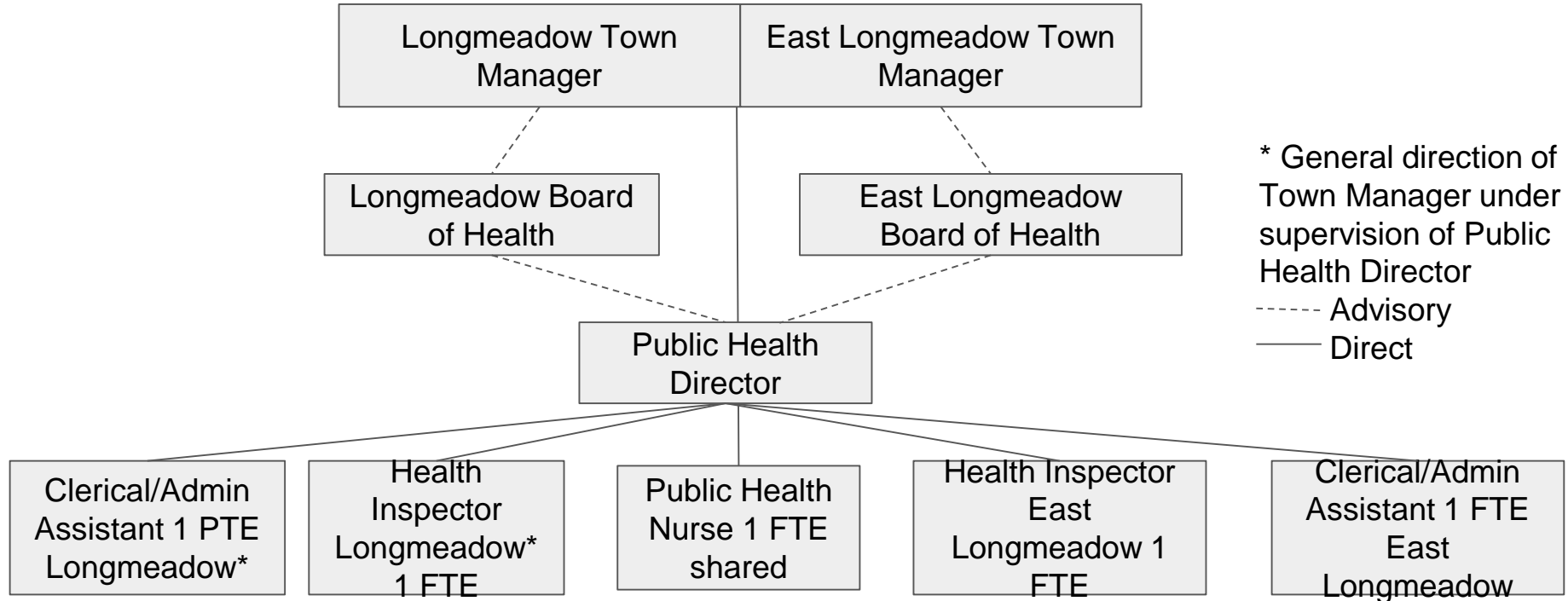


East Longmeadow Org Chart





Proposed Org Chart for Shared Services





How can regional planning agencies assist you if you're interested?

- Bring interested parties together for discussion.
- Help provide access to grants and opportunities.
- Provide professional experience and advice.
- Work closely with local officials to accomplish results.
- Identify long term partnerships and relationships.
- Develop organization documents and protocols.



Memorandum of Understanding (MOU) Process

- MOU is the document which defines the regional relationship.
- MOU's are necessary and required to set up a regional entity.
- Communities could also establish stronger entity through a “Joint Powers Agreement.”
- Communities need to have a common goal and a local champion.
- Goal/Need becomes center of the MOU relationship.
- Need to have agreement from all parties to move ahead.



Lessons Learned



- This is a LONG process
- Keep elected officials informed as much as possible throughout the process
- Don't sell it as a cost savings mechanism (Efficiency, Expanded services, meeting Mandates)
- Political setbacks are common everywhere - this is new
- Don't let both communities lead officials move or retire right before things are signed
- Shared services agreement are much different than they were when some of the existing agreements were made
- Don't forget to celebrate the success!

Contact Information

- **Aimee Petrosky**
 - Director of Public Health, Town of East Longmeadow
 - 413-525-5400 x 1105 or aimee.petrosky@eastlongmeadowma.gov
- **Beverly Hirschhorn**
 - Director of Public Health, Town of Longmeadow
 - 413-565-4140 or bhirschhorn@longmeadow.org
- **Eric Weiss**
 - Manager of Regional and Municipal Programs
 - 413-781-6045 or eweiss@pvpc.org

